



Photo: Maria Basova

## Bolin Centre Newsletter #9

Dear Bolin Centre members,

The days are getting shorter and darker, but we are cheered and excited about the upcoming annual events, which will light up November. We hope they bring a lot of knowledge, inspiration, and joyful memories.

### **Continuing a tradition: ECRs Day kicks off Bolin Days!**

We're happy to continue the tradition of launching Bolin Days with an ECRs activity. We invite all Bolin Centre's early career researchers to join us for a day of engagement, knowledge sharing, and networking. This event provides a unique opportunity to connect, learn, and engage with experts from the Bolin Centre External Science Advisory Group and Science Advisory Research Leaders.

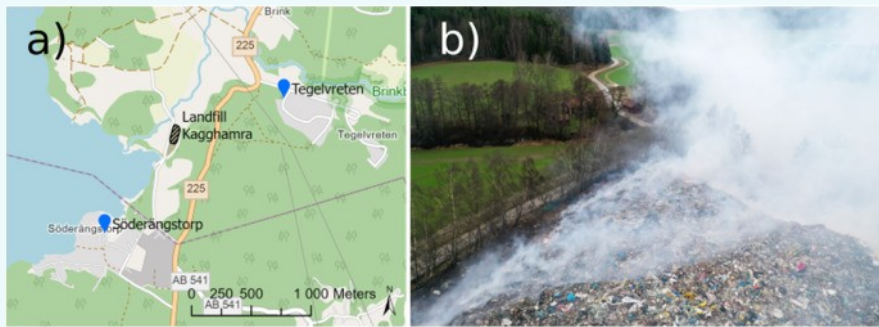
[Register here](#)

We are looking forward to welcoming you at the **15th Bolin Days** on November 29-30. Although the registration deadline has passed, if you missed it, please contact Maria Basova ([maria.basova@aces.su.se](mailto:maria.basova@aces.su.se)) for assistance.

Don't miss the last opportunity to register for the [Symposium on climate and health](#), taking place on November 21, 2023.

We will keep you informed about the latest news in our monthly Newsletter. Our aim is to make the Newsletter a valuable source of information, inspiration, and research exchange. We need your help for this, so please don't forget to share any information you'd like to see published in the upcoming Newsletter by sending it to [bolin@su.se](mailto:bolin@su.se).

Thank you for your continued support, and we look forward to seeing you at our upcoming events.



Location of the fire and the two stationary measurement sites Söderängstorp and Tegelvreten and (b) view of the fire (photo: Piritta Lutz)

## Strong impact on air quality by the Kagghamra fire revealed in new study

A recent study conducted by researchers from the Department of Environmental Science at Stockholm University has shed new light on the impact of the Kagghamra fire on the air quality of nearby residential areas, which occurred south of Stockholm in December 2020.

The study, published in the open-access journal *Atmospheric Environment*, reveals a significant increase in concentrations of airborne particles, particulate heavy metals, and polycyclic aromatic hydrocarbons (PAHs) during the course of the fire, underscoring the importance of monitoring and addressing air quality during such events.

[Read more](#)

## Methane levels are rising – could it be nature's response to warming?

Scientists at the [Askö research base](#) in southern Sweden are investigating a methane mystery. They're concerned, because levels of methane in the atmosphere are rising rapidly and nobody is quite sure why.

[Read more](#)



Volker Brüchert, Associate Professor of Geochemistry at Stockholm University.  
Photo: Euronews

## Expression of interest for the IPCC meeting on climate change and cities

There's a unique opportunity to participate in a preparatory meeting for the IPCC's upcoming special report on climate change and cities. To register your interest, please email your expression of interest to [ipccfocalpoint@smhi.se](mailto:ipccfocalpoint@smhi.se) no later than **November 14, 2023**. The nomination of experts will be facilitated through the national contact point for the IPCC.

[Read more in Swedish](#)

## Projects must contribute information that facilitates climate adaptation

SMHI is participating in a Horizon Europe project aimed at researching and providing climate information for up to 30 years ahead to facilitate decisions about climate adaptation in various sectors. The research project involves, among other things, collecting survey responses from all over Europe.

[Read more in Swedish here](#)



Flood. Photo: SMHI



## Multidisciplinary Smart Exploration Research Centre for Critical Raw Materials

Stockholm University researcher Dr. Iain Pitcairn from the Department of Geological Sciences is a collaborator on a successful application to the Swedish Foundation for Strategic Research (SSF – Stiftelse för Strategisk Forskning) to develop a multidisciplinary research centre in sustainable supply of critical raw materials (CRM) to address issues concerning the energy transition and climate action.

Information on the grant from SSF can be found [here](#)

## News from Horizon Europe

### **Stockholm one of ten European cities awarded with EU Mission Label for their plans to reach climate-neutrality by 2030**

The EU Mission Label was awarded by the [EU Mission for Climate-Neutral and Smart Cities](#), one of the five EU Missions in Horizon Europe. The label is an important milestone as it recognizes the cities' plans to achieve climate-neutrality by 2030 already and aims to facilitate access to public and private funding towards that objective.

[More info](#)

### **Towards a sustainable future - What is the potential of the EU's bioeconomy?**

30 November, 12:00-13:45, hybrid (Brussels and online)

Policy event - According to the European Commission, a sustainable bioeconomy is necessary to build a carbon neutral future in line with the climate objectives set out in the Paris Agreement. Join this Euractiv Hybrid Conference to discuss the future of the EU's bioeconomy.

[More info](#)

---

## OPPORTUNITIES

### **Apply to do research at Tarfala Research Station**

Tarfala Research Station in northern Sweden welcomes applications from guest researchers during 2024.

Application deadlines:

For visits during spring/winter 2024: no later than December 16, 2023.

For visits during summer 2024: no later than March 1, 2024.

Contact: [tarfala@natgeo.su.se](mailto:tarfala@natgeo.su.se)

More information: <https://www.su.se/tarfala-research-station/>

### **Master Student Grant at Tarfala Research Station (TRS) 2024**

Master students are welcome to apply to cover field work cost at TRS for a master thesis. Deadline for application is February 28, 2024.

[Read more here](#)

### **Assistant Professor Biological Feedbacks in the Marine Carbon Cycle**

at the [Institute for Biodiversity and Ecosystem Dynamics \(IBED\)](#) at the University of Amsterdam.

Deadline: 19 November 2023

[More information](#)

### **PhD opportunity** at the University of Plymouth

Integrating modern and long-term ecology to inform UK peatland fire management in a changing climate

<https://www.aries-dtp.ac.uk/studentships/woodbridge2024/>

## Where is Gender in Sustainability Science?

Date and Time: **November 15 at 13.00-16.00**

Place: **Stockholm Resilience Centre**

An inspiring event by Stockholm Resilience Centre that delves into the profound impact that gender perspectives have on the field of Sustainability Science. We will host a dynamic panel discussion that will share insights on conceptual advances, research practice and education, followed by a workshop to identify challenges and opportunities in applying a gender perspective in the field.

You will find the invitation and the programme attached to this newsletter.

[Read more and register here](#)

## CALENDAR

21  
NOVEMBER

### Symposium on climate and health

The Health Committee of the Royal Swedish Academy of Sciences, in collaboration with Bolin Centre for Climate Research, Chalmers University of Technology, Karolinska University Hospital, Stockholm Trio and Umeå University, organises a symposium on the topic of climate and health.

The open symposium will bring together experts from different fields relevant for understanding the interactions, challenges and co-benefits related to climate and health.

[Register here](#)

28  
NOVEMBER

### Early Career Researchers (ECRs) Day

organized by the Climate Research School at the Bolin Centre

**28 November 2023**

**10:00-15:00**

William- Olssons hall and Y10, Y12, Y13, House of Geosciences, Stockholm University

[Register now to secure your spot and be a part of a day filled with learning and networking opportunities.](#)

Registration is open until November 23.

29-30  
NOVEMBER

### Bolin Days 2023

Place: Aula Magna, SU

The last date for registration has passed. If you missed the registration deadline, please contact Maria Basova at [maria.basova@aces.su.se](mailto:maria.basova@aces.su.se).

Tentative programme is available under the designated tab at the top of the registration page.. [Here](#)

24-25  
JANUARY

### SBDI Days 2024: Towards Data-driven Ecology

is hosted by the Swedish Biodiversity Data Infrastructure and will take place at the Swedish Museum of Natural History in Stockholm. The event will offer keynotes and presentations, posters, demonstrations, and time to mingle and exchange ideas about data driven ecology.

Register [here: nrm.se/sbdidays](https://nrm.se/sbdidays), **deadline 2024-01-10**

**Sign up for a presentation**

The organizers offer **twelve** slots for presentations and encourage scientists working with any of the symposium topics (see preliminary program) to present their research. You can apply for a 15-min talk by submitting a title and abstract (max 300 words)

to [support@biodiversitydata.se](mailto:support@biodiversitydata.se), **latest by 2023-12-20**

SAVE THE DATE! Swedish Climate Symposium 2024

## Bolin Centre publications

As part of our ongoing efforts to keep our community updated and informed, we encourage you to share your recent publications with us. By doing so, we can ensure that our list of scientific journal publications remains comprehensive and up to date.

Here you will find the list of recent publications at [bolin.su.se/publications](https://bolin.su.se/publications)

## Interactions with media

If you are available for short-notice interactions with media, please inform us. Additionally, consider adding yourself to Stockholm University's Climate Experts list [here](#) to enhance your visibility. We can assist you with this; just write to [bolin@su.se](mailto:bolin@su.se).

## News from the Climate Research School (CRS)

### **Welcome to Early Career Researchers (ECRs) Day**

Join us for a day of engagement, knowledge sharing, and networking for early career researchers at the Bolin Centre. This event is designed to facilitate social interaction, build connections, gain relevant research knowledge, and provide a unique opportunity to engage with the Bolin Centre External Science Advisory Group and Science Advisory Research Leaders.

[Register here](#)

### **Course in open science: "Investment in your future research career"**

Stockholm University offers a course in open science for doctoral students. The deadline for applications for the spring semester is December 15.

[Read more and apply here](#)

## Book "En varmare värld" (A Warmer World) by Naturvårdsverket

We want to remind you that the third edition of "En varmare värld" (A Warmer World) by the Swedish Environmental Protection Agency (Naturvårdsverket) is still available at the Bolin Centre as a printed copy in Swedish. This is a great opportunity to get the book about fundamental processes and for those who want to understand the complex issue of climate change and its consequences.

You can get the book by contacting [bolin@su.se](mailto:bolin@su.se).

## Promotional material

If you need Bolin Centre logos or promotional material for your upcoming presentations, reports, or other activities, please feel free to get in touch. We have stickers with our logo, T-shirts (all sizes, except M), bags and buffs.

To make a request, kindly reach out to Maria Basova at [maria.basova@aces.su.se](mailto:maria.basova@aces.su.se), and we will be more than happy to assist you.

All members of the Bolin Centre receive the Bolin Centre Newsletter, which presents our current activities and latest news.

If you have suggestions or research that you would like to share in upcoming newsletters, please contact [bolin@su.se](mailto:bolin@su.se).

Please note that the newsletter is typically sent once a month.

Editor: Maria Basova (Coordination)

Bolin Centre for Climate Research

Contact: [bolin@su.se](mailto:bolin@su.se)

[Click here to unsubscribe](#)

SOCIAL MEDIA

