



Stockholm  
University

Bolin Centre for Climate Research

A collaboration between Stockholm University, KTH and SMHI

Week 10, 2022

[Click here to read the letter in your browser](#)

The Bolin Centre is a multi-disciplinary consortium of over 400 scientists in Sweden that conducts research and graduate education related to the Earth's climate.



#### Aiming for fair climate adaptation

On 28 February, the IPCC presented a new climate report. But what is required for adaptation measures to be perceived as legitimate and fair? That question is the focus of Bolin Centre member Lisa Dellmuth's research.

Read the article on [the Bolin Centre's website](#) »

---

#### The CRS/ClimBEco side event during the Swedish Climate Symposium has been rescheduled!

Take the chance to meet other PhD students working in climate research. The Climate Research School together with ClimBEco Research School in Lund are organizing a side event during the symposium. On **18 May**, we will meet in the morning for scientific presentation and discussions, a great way to disseminate your research and meet fellow students. We will conclude the event with climbing, networking and playing in the trees at the beautiful Sörsjön Adventure park. And best of all - it's free!

**Registration deadline:** March 18, 2022

[More information and registration](#) »

---



## Swedish Climate Symposium

Welcome to the Swedish Climate Symposium in Norrköping, Sweden. The 2.5 day conference will be a meeting spot for national and international researchers and persons working within the climate area in public and private organizations.

**Time:** 16–18 May 2022

**Venue:** in-person event in Norrköping, but online possible

**Registration:** no later than 15 March

Organizers: SMHI, the Strategic Research Areas MERGE and BECC, and the Bolin Centre for Climate Research.

Partners: SMHI/Rosby centre, Lunds Universitet, Göteborgs Universitet, Stockholms universitet, KTH, Chalmers och Linneausuniversitet

For programme and registration, visit [the Swedish Climate Symposium website](#) »

---

## Job opportunity: Coordinator at the Bolin Centre for Climate Research

The coordinator will be placed at the Department of Environmental Science (ACES), one of the partner institutions within the Bolin Centre, and among SU's biggest departments at the Faculty of Science with more than 170 employees.

The work will be conducted in close collaboration with the two co-directors of the Bolin Centre, the Bolin Centre research theme leaders, and the communication staff based within ACES and centrally at Stockholm University.

Read the full job announcement on [Stockholm University's website](#) »

---

## Bolin Centre researchers in media

[2022-03-02 Kristoffer Hylander i SR: "Dags att ge första hjälpen till skogens arter i klimatkrisen"](#) »

[2022-02-28 Flera Bolin forskare i SvD: "Lättare spå klimatet om 60 år än vädret 10 dagar"](#) »

[2022-02-23 Michael Tjernström i SR: "Ny arktisexpedition med Oden"](#) »



### Publications

#### Recent Bolin Centre publications

On [bolin.su.se/publications](https://bolin.su.se/publications) you'll find a list of scientific journal publications by Bolin Centre scientists. Here are the most recent ones we have published on the website for 2022.

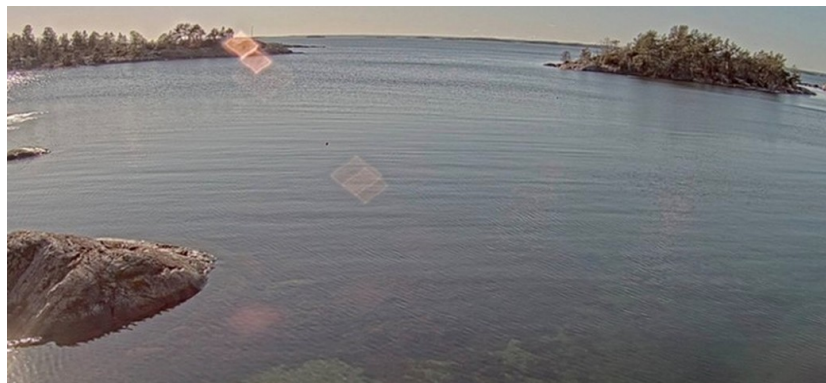
- Ljungqvist, F.C., Thejll, P., Christiansen, B., Seim, A., Hartl, C. & Esper, J., 2022. The significance of climate variability on early modern European grain prices. *Climatic Change*, 16: 29–77. <https://doi.org/10.1007/s11698-021-00224-7>
- Ljungqvist, F.C., Seim, A., Tegel, W., et al, 2022. Regional patterns of late medieval and early modern European building activity revealed by felling dates. *Frontiers in Ecology and Evolution*, 9: 825751. <http://doi.org/10.3389/fevo.2021.825751>
- Fuentes-Franco, R., Koenig, T., Docquier, D. et al, 2022. Exploring the influence of the North Pacific Rossby wave sources on the variability of summer atmospheric circulation and precipitation over the Northern Hemisphere. *Clim Dyn*. <https://doi.org/10.1007/s00382-022-06194-4>
- Reghellin, D., Coxall, H.K., Dickens, G.R., Galeotti, S., Backman, J., 2022. The

late Miocene-early Pliocene biogenic bloom in the eastern Equatorial Pacific: New insights from Integrated Ocean Drilling Program Site U1335.

Paleoceanography and Paleoclimatology: 37(3), 1–16. <http://dx.doi.org/10.1029/2021PA004313>

- Strandberg, G., Lindström, J., Poska, A., Zhang, Q., Fyfe, R., Githumbi, E., Kjellström, E., Mazier, F., Nielsen, A. B., Sugita, S., Trondman, A.-K., Woodbridge, J., and Gaillard, M.-J., 2022. Mid-Holocene European climate revisited: New high-resolution regional climate model simulations using pollen-based land-cover, Quaternary Science Reviews, 281, 107431, <https://doi.org/10.1016/j.quascirev.2022.107431>
- Pulkkinen, K., Undorf, S., Bender, F.A.-M., Wikman-Svahn, P., Doblas-Reyes, F., Flynn, C., Hegerl, G.C., Jönsson, A., Leung, G.-K., Roussos, J., Shepherd, T. G., Thompson, E., 2022. The value of values in climate science, Nat. Clim. Chang. <https://doi.org/10.1038/s41558-021-01238-9>
- Shupe, MD, Rex, M, Blomquist, B, (inc. Svensson, G.) et al., 2022. Overview of the MOSAiC expedition—Atmosphere. Elementa: Science of the Anthropocene 10(1). DOI: <https://doi.org/10.1525/elementa.2021.00060>

Please send your newly published publication to [bolin@su.se](mailto:bolin@su.se) »



[View the Askö inlet livestreamed!](#)

The sea outside of the Askö laboratory is now livestreamed from a web camera on a weather station. See what the sea looks like right now, are the waves beating or is the sea calm? Is the sun shining or is the night sky reflected in the sea? Maybe you will see a white tailed eagle fly by or detect some of the birds that are breeding on the islands.

Read more on the [Baltic Sea Center's website](#) »

## CALENDER

17

Mar

### Seminar: Voluntary initiatives for sustainability in global supply chains

**Time:** 17 March at 13h00

**Organizer:** Stockholm University Centre for Circular and Sustainable Systems (SUCCeS)

Read more and register on [Dep't of Environmental Science's website](#) »

23

Mar

### Webinar: Challenges for handling spatial data across disciplines – examples from different research fields

**Time:** 23 March at 11h00-12h00

**Organizer:** Swedish National Data Service

[Read more and link to participation via the Bolin Centre's website](#) »

16-18

May

### Swedish Climate Symposium – 16–18 May 2022

The conference will be a meeting spot for national and international researchers and persons working within the climate area in public and private organizations.

**Time:** 16-18 May

**Organizers:** SMHI, the Strategic Research Areas MERGE and BECC, and the Bolin Centre for Climate Research

**Read more:** [The Bolin Centre website](#) »

15-16

Nov

### Save the date: The Bolin Days

**Time:** 15-16 November

## OFFICE STAFF - BOLIN CENTRE AT CAMPUS

Due to COVID-19, the Bolin Centre Office will be irregularly staffed at the University. Sometimes, we work from home. Don't hesitate to get in touch with us via mobile or e-mail.

- Magnus: 076-695 70 78, [magnus.atterfors@su.se](mailto:magnus.atterfors@su.se) (Communications)
- Annika: 072-148 91 49 [annika.granebeck@su.se](mailto:annika.granebeck@su.se) (Coordination)
- Sara Gershagen: 076-698 41 02 [sara.gershagen@su.se](mailto:sara.gershagen@su.se) (Coordination)

The **Bolin Centre Weekly News** provides you with a selection of our current activities and latest news and is sent to all members of the Bolin Centre. If you have suggestions that you would like to include or **research that you would like to share** in coming Weekly News, please contact [bolin@su.se](mailto:bolin@su.se).

Editor: Magnus Atterfors

Photo: Martin Jakobsson, Stella Salander Most photos

**Stay updated**

Find news and upcoming events at [bolin.su.se](http://bolin.su.se) and follow us on [Twitter](#), [Facebook](#) and [YouTube](#).

