

Week 40, 2019

[Click here to read the letter in your browser](#)

The Bolin Centre is a multi-disciplinary consortium of over 350 scientists in Sweden that conducts research and graduate education related to the Earth's climate.



The Climate Research School's PhD Day

The PhD Day for Bolin Centre PhD students and postdoctoral researchers is full of interactive and useful items for those in their early climate science career.

What will the event give you?

- Tips from the Climate Research School, e.g. grants, courses and communication resources.

- Communication skills from Martin Hedberg, meteorologist with years of experience communicating complex systems. He started out with Power Point – today he thinks that it works just as well to use a marker on wallpaper (!).

- Inspiration from three former PhD students who has chosen different career routes:

- Marko Filipovic, experienced environmental consultant and project manager with a demonstrated history of working on solutions to environmental problems
- Somya Joshi, senior research fellow with expertise in the field of Governance & Sustainability, as well as stakeholder engagement across global contexts
- Michael Tjernström, professor in meteorology at Stockholm University who also frequently gives public lectures on climate and climate change

- The chance to practice your communication skills (poster and presentation)

- Presentation competition - winners will be awarded with research money!

- A unique opportunity to meet peers within climate science, have dinner and enjoy the Geopub!

Register by e-mail to eva.gylfe@su.se no later than **Tuesday the 8th of October**
[More information about the day](#)

Welcome!

Participation support for Bolin Centre PhD students



The Bolin Centre Climate Research School (CRS) provides financial support to our PhD students to participate in climate related conferences and courses. There are two calls per year with deadlines March 1 and October 14.

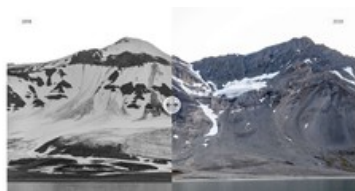
To apply for support you need to:

- Be a PhD student
- Be a member of the Bolin Centre

- Participate in a course or presenting at a conference related to climate
- Have your supervisor's support for going in writing (an email will do, but include it in the application)
- Fill in the [application form](#) and send it to bolincrs@su.se with the subject "Application to CRS PhD participation support"

The maximum funding per person is 5000 SEK. For questions, please contact bolincrs@su.se.

BOLIN CENTRE IN MEDIA



In Swedish | Smältande glaciärer

Erik Schytt Holmlund, Institutionen för naturgeografi, var med i NRK om smältande glaciärer i ett fint bildreportage som kan ses [här](#).

In Swedish | Ett nytt Arktis

Ninis Rosqvist, Institutionen för naturgeografi, intervjuades i Vetenskapsradions Klotet. [Programmet](#) handlade om att området kring Nordpolen håller på att byta skepnad när klimatet förändras.



OTHER INFORMATION



In Swedish | Nominera till IVAs 100-lista

[Nominera forskning](#) för hållbar konkurrenskraft till IVAs 100-lista! IVAs 100-lista sätter ljuset på aktuell forskning, och underlättar för forskare och företag att hitta varandra och tillsammans skapa innovation och nya affärsmöjligheter. 2020 års lista vill synliggöra forskning med koppling till hållbarhet.

BOLIN CENTRE SEMINARS AND EVENTS

10

OCT

Bolin Centre Seminar Series 2019 | Research Area 6

Titel: Project GLOBAL GINKGO: Refining a palaeo-pCO₂ proxy using a living fossil plant

Speaker: Margret Steinhorsdottir, Department of Palaeobiology, Swedish Museum of Natural History

Time & place: October 10, 13h00–14h00, Ahlmannsalen, Geoscience Building

Abstract: [HERE](#)

16

OCT

Working with Python on Tetralith

Representatives from the National Supercomputer Centre (NSC) will give a training event on how to use Python on the supercomputer Tetralith. The training event will focus on how to set up customised Python environments using conda.

Time & place: October 16, 10h30, Ahlmannsalen, Geoscience Building

[More information and registration](#)

22

OCT

The Bolin Centre PhD Day

We welcome all PhDs and Postdocs within the Bolin Centre to our PhD Day! The day will include PhD-presentations and posters, guest lectures, dinner, pub and much more.

Time & place: October 22 in the William Olssonsalen, Geoscience building

Please register: by e-mail to eva.gylfe@su.se no later than Oct 8

Full program: [HERE](#)

19

NOV

Bert Bolin Climate Lecture 2019

Every year, a distinguished Bert Bolin Climate Lecturer is invited to Stockholm to hold a popular science lecture. The 2019 Bert Bolin Climate Lecture will be given by Professor Maureen E. Raymo, a renowned scientist who has been a pioneer in the study of ice ages and sea level in Earth's history.

When & where: November 19 at 14h00–15h00, Aula Magna

20-21

NOV

Bolin Days

Welcome to this year's Bolin Days! We offer an interesting scientific programme and fun social events.

Time & place: November 20-21, Nordenskiöldsalen, Geoscience Building. Please save the date, more info to come.

3

DEC

Bolin Centre Seminar Series 2019 | Research Area 7

Time & place: December 3, 14h00–15h00, Ahlmannsalen, Geoscience Building. Please save the date, more info to come.

The **Bolin Centre Weekly News** provides you with a selection of our current activities and latest news and is sent to all members of the Bolin Centre. If you have suggestions that you would like to include in coming Weekly News, you are welcome to send these to bolin@su.se.

Editor: Annika Granebeck
Foto: Martin Jakobsson, NRK, Niklas Zachrisson/SR, IVA

Stay updated

Find news and upcoming events at bolin.su.se and follow us on [Twitter](#), [Facebook](#) and [YouTube](#).

