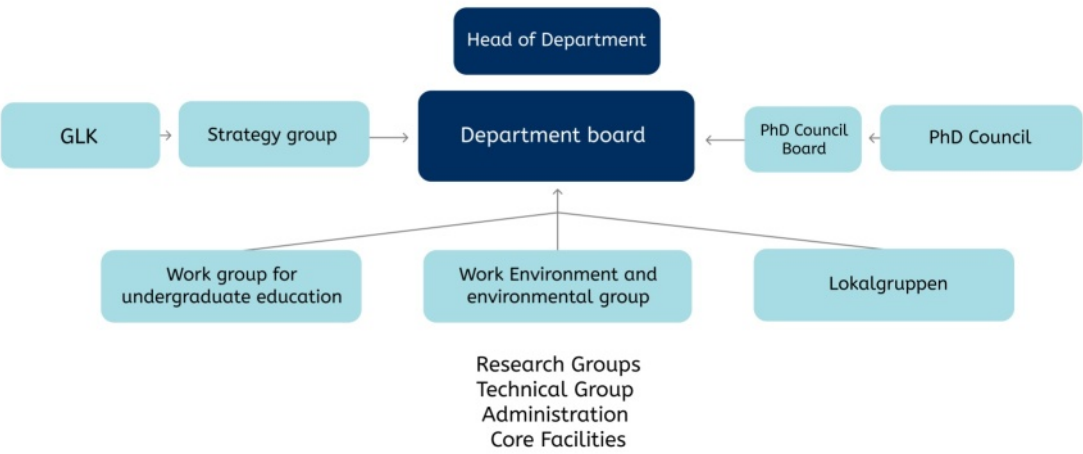


How are decisions made at MBW?

A brief description of how decisions are made at our department and of where you should turn to if you want to make your voice heard.

How decisions are made at our department is regulated centrally at Stockholm University. It is the Department Board and the Head of Department who have the authority to make decisions. Several working groups at the department are important in discussing relevant issues and preparing decisions for the Board. You are always welcome to contact our groups if you have something that you want to discuss.



I have a proposition, where do I turn?

I have an idea of how to make better use of our communal spaces!
Great! Reach out to Lokalgruppen.

I am concerned about the working conditions at MBW during the weekends.
Talk to your group leader/direct manager and let the Work Environment and Environmental group know about your concern.

I have an idea of how to improve the PhD education.
Discuss your idea in the PhD Council and reach out to the director of PhD studies.

I want to participate in the decisions concerning MBW's future.
Consider becoming a candidate for the next election to the Department Board, or vote for someone you trust.

The Department Board

The Department Board decides on many important questions, including MBW's budget, action plans, strategic recruitments and PhD student admissions. The Board is elected every third year, and is chaired by the Head of Department. Researchers, Technical and Administrative personell and PhD students are all represented. You are eligible to vote and be elected to the Department board if you work 50% or more, and for a period of two years or longer. The PhD students elect their representatives on an annual basis.

Contact person: Neus Visa, neus.visa@su.se

The Head of Department

The Head of Department is the highest position at MBW, and she/he is overall responsible for the department's activities. The position (along with the position of Vice Head of Department) is re-appointed every third year by the Principal of Stockholm University. The Head of Department can (among other things) enter agreements on behalf of the department, decide on change of PhD student supervision, and has the responsibility for the department's recruitments and work environment.

Contact person: Neus Visa, neus.visa@su.se

Strategy group

The Strategy group consists of the Head of Department, the Vice Head of Department and six group leaders who are elected in connection with the election to the Department Board. In the Strategy group, issues of strategic value are discussed from a group leader perspective.

Contact person: Eva Sverremark Ekström, eva.sverremark@su.se

Group leader collegium (GLK)

The GLK consists of MBW's Group leaders and Emeriti. It is a forum for information and discussion, and an important place to establish and prepare future decisions.

Contact person: Neus Visa, neus.visa@su.se

Work group for undergraduate education (GUG)

GUG is a group for discussions about undergraduate education. In GUG, decisions are prepared concerning everything from course syllabuses to the principles for staffing undergraduate courses. The Department Board chooses its members every second year, with the exception of the PhD student representative who is re-elected by the PhD Council on an annual basis.

Contact person: Stefan Åström, stefan.astrom@su.se

Work environment and environmental group (AMG)

In AMG, matters concerning the environment and work environment are discussed. It is for example the AMG that prepares all action plans concerning environment, work environment and gender equality (which are later decided upon in the Board). MBW's HR Officer chairs the group, which includes the Head of Department, the Lab manager, MBW's Security Officers (of which one is a PhD student representative), the KLARA officer and MBW's Gender Equality Officer (also a PhD student).

Contact person: Van Le Sabrie, van.lesabrie@su.se

Lokalgruppen (LG)

Lokalgruppen consists of representatives from each corridor, including three PhD students. The group shall develop long-term, strategic plans for MBW's use of space, and handle practical issues regarding our localities, and its members are appointed each year by the Department Board and the PhD Council.

Contact person: Anna-Lena Spetz, anna-lena.spetz@su.se

PhD Council

The PhD Council includes all PhD students at MBW and its primary function is to ensure quality of education and to promote good working and social environment for our graduate students. The PhD Council elects PhD student-representatives to the Department Board, GUG, AMG and LG.

PhD Council Board

The PhD Council Board is responsible for the overall operations of the PhD Council. The board meets regularly and normally consists of up to six graduate students who are re-elected each year by the PhD Council.

Contact: phdboard.mbw@su.se

