

# Annual Report 2022 (mini)



Biogeo students at Hässlen, Hedemora, Dalarna performing a groundwater exercise. Photo: Stefan Wastegård.

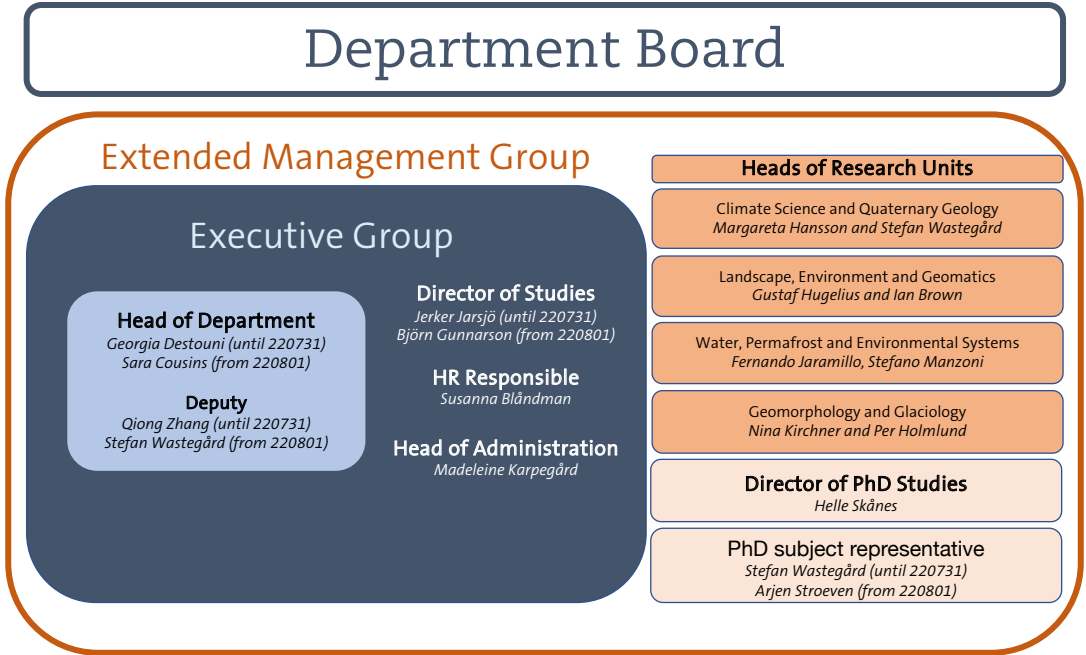
Department of  
Physical Geography



Stockholm  
University



# Department Structure



# Research Grants Awarded 2022

Grant Receiver	Funding Organisation	Project Name	Total Grant (TSEK)
Belyazid Salim	EU	NUTRIBUDGET - Optimisation of nutrient budget in agriculture	256
de la Torre-Castro Maricela	Vetenskapsrådet	Den blåa ekonomin i tropiska havsskap: inkomstmöjligheter och transformation under klimatförändringar	800
Destouni Georgia	Vetenskapsrådet	Det kopplade sötvattenssystemets variationer, trender, och deras drivkrafter runt världen	3 600
Eriksson Victor	Bolincentret	How does grassland restoration affect biodiversity and soil C sequestration?	96
Fischer Sandra	Naturvårdsverket	Gruvkemikaliers miljöpåverkan i nedströms vattendrag	285
Hugelius Gustaf	REA/HORIZON	AI4SoilHealth: Accelerating collection and use of soil health information using AI technology to support the Soil Deal for Europe and EU Soil Observatory	690
Hugelius Gustaf	Vetenskapsrådet	Torvmarker med permafrost under komplexa klimatscenarier kollaps, resiliens eller stabilitet	3 600
Jaramillo Fernando	Formas	Förslag på optimal återställning av hydrologiska regimer i s venska våtmarker genom djupinlärning och hydrogeodesi	3 805
Jaramillo Fernando	Formas	Utökad övervakning av vattenresurser för att möta klimatrelaterade risker i vattenförsörjningen	3 917
Kalantari Zahra	EU	NATURANCE	284
Kirchner Nina	Formas	Glaciärer, klimat och snabba förändringarna i det svenska Arktis - ett kommunikationsprojekt genom erfarenhetsbaserat lärande vid Tarfala forskningsstation	1 779
Kirchner Nina	Vetenskapsrådet	Växelverkan mellan glaciärer och hav i norra Grönland: ny kunskap om norra Grönlands utloppsglaciärer för att bättre kunna begränsa framtida havsnivåhöjningar.	3 476
Rosqvist Gunhild	Formas	Att undvika den gröna omställningens dilemma - Behovet av klimatkonsekvensanalyser för områden med renskötsel i Sápmi	11 451
Scaini Anna	Formas	Växelverkan mellan glaciärer och hav i norra Grönland	3 970
Wastegård Stefan	Vetenskapsrådet	Tefrokronologi i Sverige - att knyta ihop säcken	2 640
Wood Heather	G Gustafsson	Övervakning av fladdermöss i Lappland	50
Zhang Qiong	Vetenskapsrådet	En undersökning av klimatsvängingar på flera århundranden i klimatmodeller	4 240
Sum			44 939



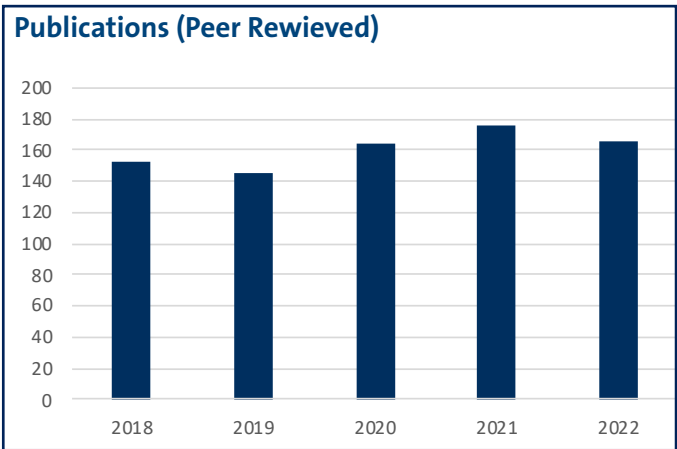
# Research Contracts Awarded 2022

Grant Receiver	Funding Organisation	Project Name	Total Grant (TSEK)
Frampton Andrew	SKB	Hydromekanisk modellanalys	4 987
Stroeven Arjen	Boliden	Quaternary geology	736
Sum			5 723



Earth Science and Geography students at Stådjän, NW Dalarna. This year's excursion in the Quaternary geology course was held by Peter Kuhry and Stefan Wastegård Photo: Stefan Wastegård.

## Publications 2022



Number of peer reviewed publications 2018-2022. A total of 166 papers were published in peer reviewed journals 2022. Statistics for 2022 reported in DiVA as of 2023-01-04.

QR Code to All NG Publications in 2022



# Infrastructure

## Field stations:

- Tarfala Research Station (TRS)
- Navarino Environmental Observatory (NEO)

## Other facilities:

- Stockholm Tree Ring Laboratory
- Chemical Laboratory
- Microscope facilities
- Optically Stimulated Luminescence Laboratory (OSL)
- Sediment Laboratory
- GIS and remote sensing cluster
- Ice Laboratory
- Geomorphology Laboratory

# Education

The Department's goal is to offer high quality education, reflecting its research profile, and meeting society's needs for theoretical and practical expertise and skills.

The Department offers education at undergraduate (Bachelor's) level in Geography, Earth Sciences, Integrated Biology-Earth Science, and Environmental Studies. In addition, a wide spectrum of graduate (Master's level) programmes and courses are given, reflecting the research profile of the Department.

Every year about 1200 students attend our undergraduate and graduate courses.

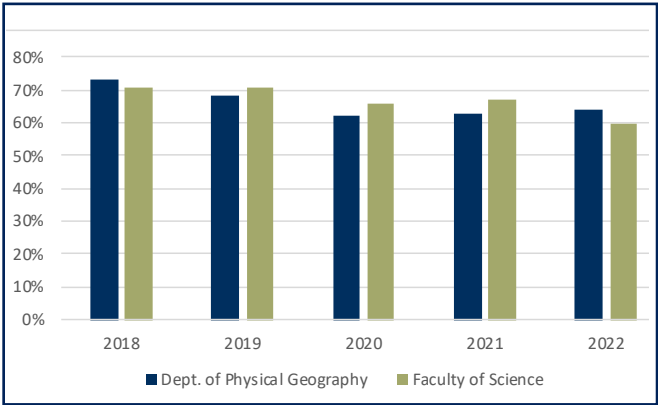
## Bachelor Programmes (180 credits) in:

- Biology-Earth Sciences
- Geography
- Earth Sciences

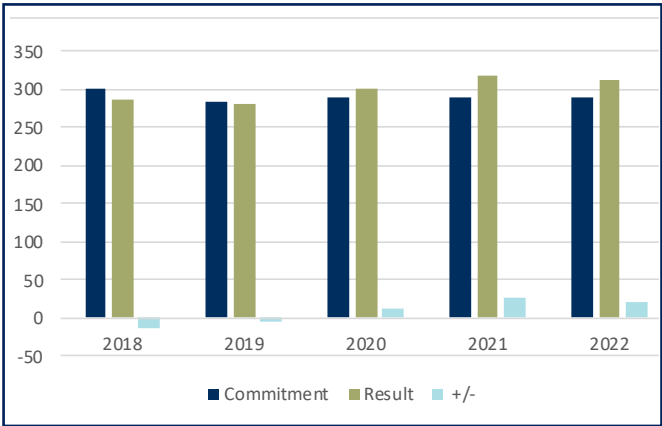
## Master's Programmes (120 credits) in:

- Environmental Management and Physical Planning
- Geomatics with Remote Sensing and GIS
- Landscape Ecology
- Polar Landscapes and Quaternary Climate

## Student Completion Rate in % (Genomströmning)



## Annual Performance Equivalent/HÅP



Excursion in Greece. Photo: Martina Hättstrand.

## PhD Education

### Doctoral Theses 2022

**Arjun Chakrawal:** *Novel approaches in modeling of soil carbon - Upscaling theories and energetics.*

**Simon Larsson:** *Ashes to ashes – applications of tephrochronology in Scandinavia.*

**Baraka Nyangoko:** *Managing Mangrove Ecosystem Services for Local Livelihoods and Adaptations in Tanzania.*

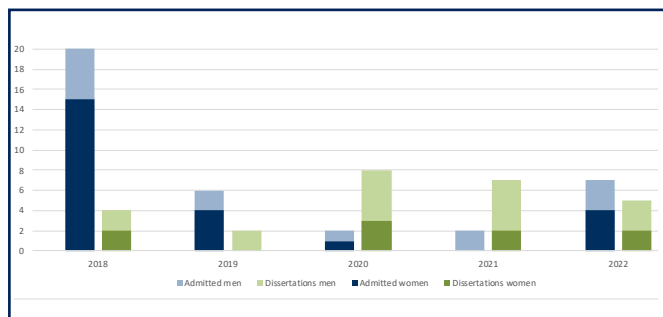
**Jóhanna Gísladóttir:** *A systems thinking approach to corruption and natural resources in the context of sustainability. The thesis was printed and defended at University of Iceland for a double degree in Environment and Natural Resources (UoI) and Physical Geography (SU).*

**Sandra Fischer:** *Waterborne pollution from mining in cold climates - Potential catchment-scale immobilization of substances by microbial sulfate reduction (MSR).*



Nailing ceremony with Sandra and Simon. Photo: Malin S. de Serves.

### PhD Student Admissions and Dissertations 2018-22



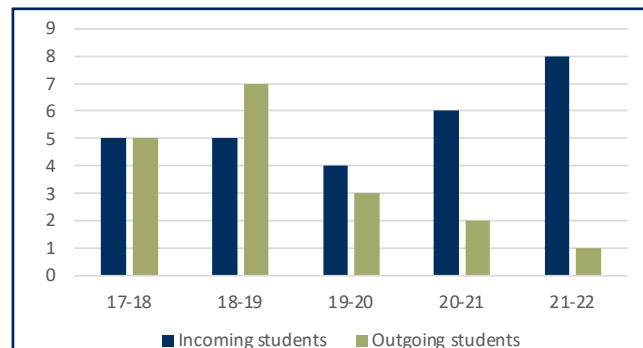
## Collaboration

### International Exchange Education

Partner Universities until spring semester 2022

Aachen, Germany  
Brussels, Belgium  
Copenhagen, Denmark  
Freiburg, Germany  
Gent, Belgium  
Grenoble, France  
Innsbruck, Austria  
Kiel, Germany  
Leuven, Belgium  
Liège, Belgium  
NTU, Singapore  
Turku, Finland

### Exchange Students 2018-22



The number of students in the graph only show exchange students from our own exchange agreements. In addition we also receive as well as send out exchange students via central (university-wide) agreements, North2North, Nordlys and CIVIS, agreements handled by the International Office at Stockholm University.

### Alumni Network

We wish to stay in touch with former students and researchers. Our alumni are part of the valuable network that supports us in a range of different ways: by being important ambassadors and by engaging in the development of research and education.

### Outreach and Media

We interact with the public and schools at annual events like; the Researchers Night, the Geology Day, the Bolin Centre Climate Festival, the Sustainability Forum and the World Water Day.

Advances in research are not just for us but for society in general. Through the media, we can contribute to the dissemination of knowledge and debate. With communication we can increase understanding and interest and broaden the views for the future. Almost every week our researchers and teachers appear in the media.



# Contact

Visiting address: The Geoscience building (Geovetenskapens hus), Svante Arrhenius väg 8, Stockholm - Frescati

Postal Address: Stockholm University, Department of Physical Geography, SE-106 91 Stockholm



Stockholm University in Frescati. Photo: UltraCam Eagle, LMV.

**Department of Physical Geography**

Telephone: +46 8-16 20 00 [natgeo.su.se](http://natgeo.su.se)



**Stockholm  
University**