

Annual Report 2024



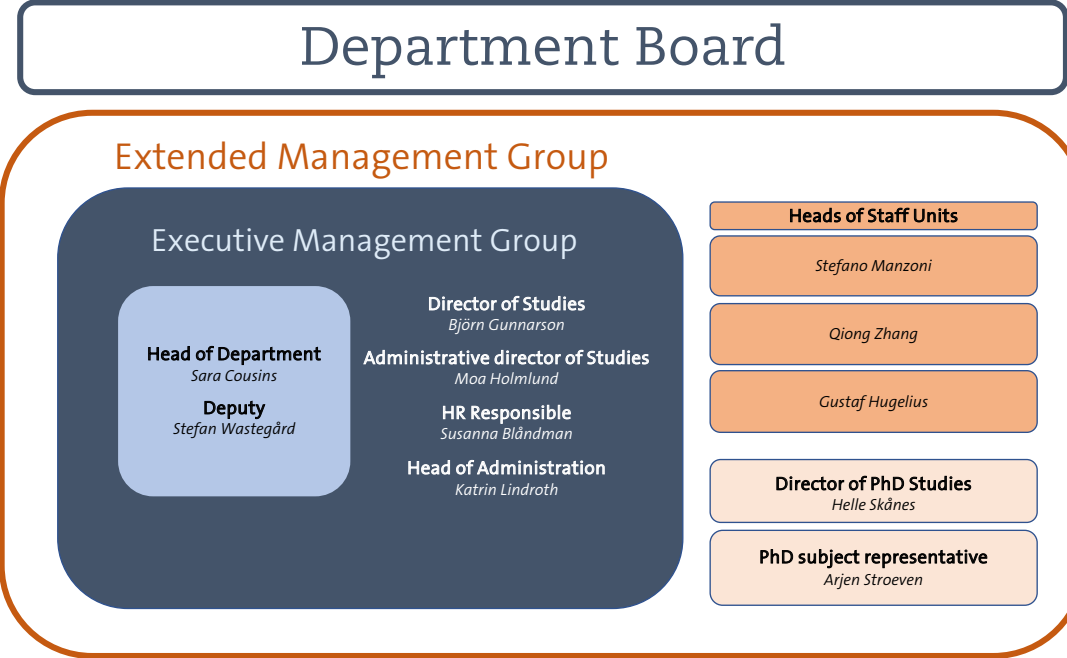
Students on the course “Project in Physical Geography” attended an excursion in the landscapes surrounding the Stockholm University field station Navarino Environmental Observatory (NEO) in Greece. The Mediterranean landscape was used as a “classroom,” for studies of different types of erosion. The picture shows a very active coastal erosion along the sea. Photo: Sara Cousins

Department of
Physical Geography



Stockholm
University

Department Structure



Research and Education Grants Awarded 2024

Grant Receiver	Funding Organisation	Project Name	Total Grant (TSEK)
Belyazid Salim	SU	Teacher of the Year	50
Belyazid Salim	AustrianAcad	Swift	649
Brown Ian	SLU	Urban trädäckning	79
Brown Ian	Naturvårdsverket	GINAMO	600
Escobar Carbonari Daniel	Formas	YSSP	75
Holmlund Per	The G.Gustafsson Foundation	Glaciärer som klimatindikator	46
Hugelius Gustaf	ESA	CLIMATE SPACE RECCAP2	1 760
Jaramillo Fernando	Formas	Water4All	5 772
Jaramillo Fernando	KTH	Digital Future	1 000
Rosqvist Gunhild	Naturvårdsverket	IPCC, Travel expenses	40
RosqvistGunhild	Formas (LU)	Extremväder	661
Scaini Anna	KTH	Exp.local-river Bolivia	50
Stroeven Arjen	VR	iQ2300	4 000
Stroeven Arjen	KTH	Equipment	888
Zhang Qiong	VR	Klimatf.Arktis	101
Sum			15 771

Research Contracts Awarded 2024

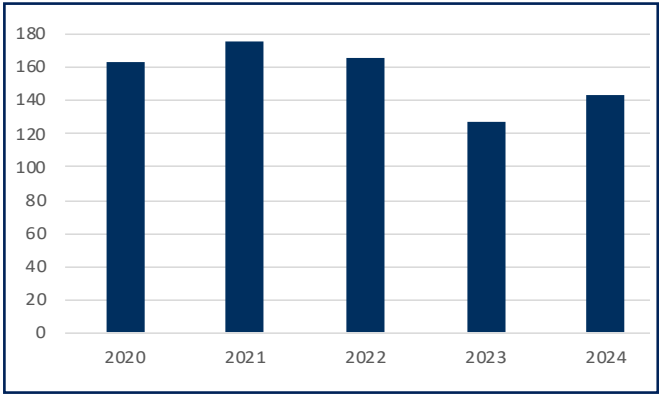
Grant Receiver	Funding Organisation	Project Name	Total Grant (TSEK)
Risberg Jan	Stif.Kulturm	Dia	80
Stroeven Arjen	SKB	Steg 1 Fas	280
Stroeven Arjen	SKB	Fas 2	760
Stroeven Arjen	SKB	Steg 1 Fas	854
Sum			1 974



Students on the Bachelor's Programme in Biology-Earth Sciences on an excursion in Dalarna as part of the course Quaternary Geology and Hydrology. They studied groundwater runoff, sand dunes, and soil distribution at the highest coastline. Photo: Stefan Wastegård

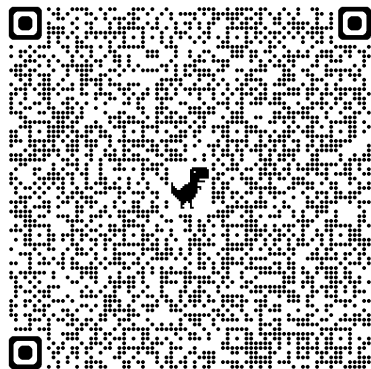
Publications

Publications (Peer Reviewed)



Number of peer reviewed publications 2020-2024. A total of 144 papers were published in peer reviewed journals 2024. Statistics for 2024 reported in DiVA.

QR-code to all publications in 2024



Infrastructure

Field stations:

Navarino Environmental Observatory (NEO)

Other facilities:

- Stockholm Tree Ring Laboratory
- Chemical Laboratory
- Microscope facilities
- Optically Stimulated Luminescence Laboratory (OSL)
- Sediment Laboratory
- GIS and remote sensing cluster
- Ice Laboratory

Education

The Department's goal is to offer high quality education, reflecting its research profile, and meeting society's needs for theoretical and practical expertise and skills.

The Department offers education at undergraduate (Bachelor's) level in Geography, Earth Sciences, Biology-Earth Science, and Environmental Studies. In addition, a wide spectrum of graduate (Master's level) programmes and courses are given, reflecting the research profile of the Department.

Every year about 1200 students attend our undergraduate and graduate courses.

Bachelor Programmes (180 credits) in:

- Biology-Earth Sciences
- Geography
- Earth Sciences

Master's Programmes (120 credits) in:

- Environmental Management and Physical Planning
- Geomatics with Remote Sensing and GIS
- Landscape Ecology
- Polar Landscapes and Quaternary Climate
- Water Resources (starts in 2025)

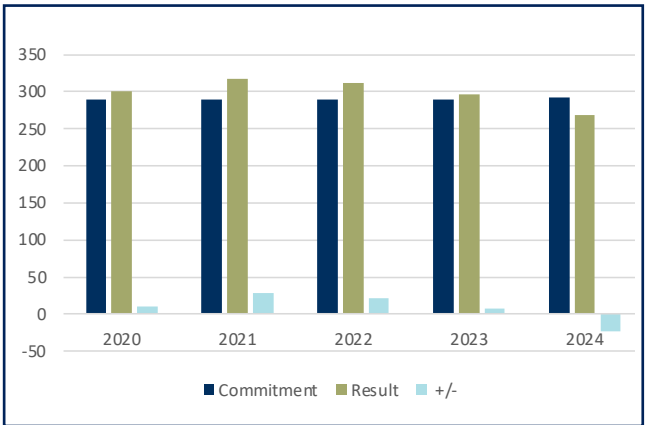


Salim Balyazid, one of the Teachers of the Year 2024! Photo: Privat



On the field course, "Swedish Landscapes", within the Bachelor's Programme in Biology-Earth Sciences, students learn how to interpret and understand the character and development of landscapes. Photo: Tove Lundegård

Annual Performance Equivalent/HÅP



PhD Education

Doctoral theses 2024

Hannah Watts, *Exploring beneath the surface of glacial landscapes: Implementing and improving geophysical investigations in glaciated environments*

Daniela Guasconi, *The hidden half of the meadow - Interactions between drought, soil carbon, roots and soil microbial communities*

Elisie Kåresdotter, *Water in a Changing World - Unraveling the Complexities of Conflict and Cooperation*

Josefine Axelsson, *Interglacial climates in proxies and models: Utilizing sampled oxygen isotopes and model simulations to understand past Indian summer monsoon variability*

Jacopo Cantoni, *Active and legacy source contributions to observed water quality - A data-driven approach to their distinction across spatiotemporal scales*

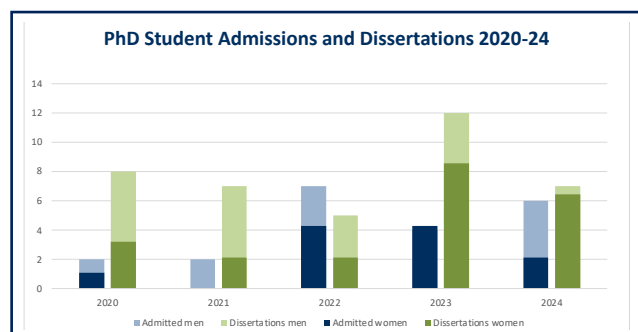
Heather Wood, *Bats at northern latitudes: The influence of habitat and climate*

Julia Wagner, *Arctic lowland tundra soils: Mapping of ice wedge polygons, soil organic carbon and nitrogen stocks on local to regional scale*



Hannah Watts with her doctoral hat to the left and supervisor Gustaf Hugelius and Daniela Guasconi at the nailing tree. Photo: Privat

PhD Student Admissions and Dissertations 2020-24



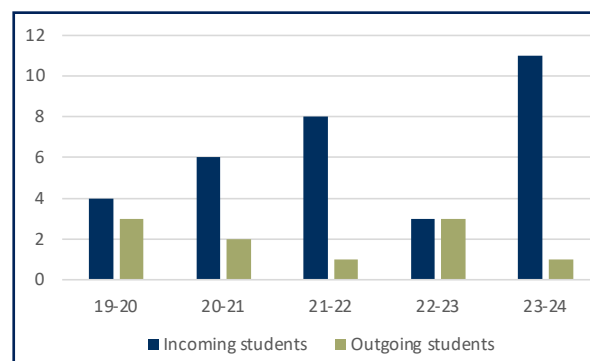
Collaboration

International Exchange Education

Partner Universities until spring semester 2024

Freie Universität Berlin, DE
 Rheinisch-Westfälische Technische Hochschule Aachen (RWTH Aachen), DE
 Trinity College Dublin, IE
 University of Turku (Åbo), FI
 Université de Liège, BE
 Universiteit Utrecht, NL
 Vrije Universiteit Brussel (VUB), BE
 Nanyang Technological University, Singapore

Exchange Students 2020-24



The number of students in the graph only show exchange students from our own exchange agreements. In addition we also receive as well as send out exchange students via central (university-wide) agreements, North2North, Nordlys and CIVIS, agreements handled by the International Office at Stockholm University.

Alumni Network

We wish to stay in touch with former students and researchers. Our alumni are part of the valuable network that supports us in a range of different ways: by being important ambassadors and by engaging in the development of research and education.

Outreach and Media

The department interacts with the public and schools at annual events like; the Researchers' Night, the Geology Day, the Sustainability Forum and the World Water Day. Our researchers communicate their findings and disseminate new knowledge to society in many different forms. From press releases, popular science papers, debates, national and international media.

Contact

Visiting address: The Geoscience building (Geovetenskapens hus), Svante Arrhenius väg 8, Stockholm - Frescati

Postal Address: Stockholm University, Department of Physical Geography, SE-106 91 Stockholm



Stockholm University in Frescati. Photo: Infrared aerial photo used for interpretation of natural resources, UltraCam Eagle, LMV.

Department of Physical Geography

Telephone: +46 8-16 20 00 natgeo.su.se



**Stockholm
University**